

Nail-On Shoeing Instruction

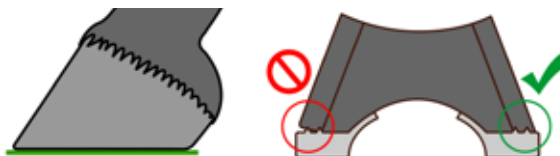
- Useful Tips for the Nailed Application -

The correct nailed application of our composite horseshoes is straightforward if you have the necessary knowledge and skills for proper nailing and riveting and pay attention to certain aspects.

(1) Preparation of the Hoof

The preparation of the bare hoof is the same as before any other shoeing and has to be done professionally.

Please also make sure that the hoof wall is absolutely plane after rasping!



(2) The Ideal Horseshoe

Choose a horseshoe that matches hoof (size and shape), temperature (Standard or Extra), and the intended use of the horse (model).

For detailed information about our range of products, please take a look at: www.duplo-frank.de/en/basics



(3) Adjusting the Horseshoe to the Horse's Hooves

- The key to functional hoof protection is the correct fitting. Trace the hoof shape onto the shoe and adjust it accordingly using an angle or belt grinder. You can also forge the horseshoe to make it narrower or wider, or use our extensions to lengthen or broaden it.
- Check the position of the knob arrays. For sensitive horses with irregularly shaped or very flat hooves, we recommend grinding down the inner knobs to prevent them from pressing on the sole.



Tips for Optional Adjustments

- If your horse is prone to forging, you can add an incision in the heel area as an additional protection against forging and add a bevel to the upper and lower border of the horseshoe.
- Adjust breakover.
- For horses with thrush, the synthetic bar can be modified to facilitate further treatment.



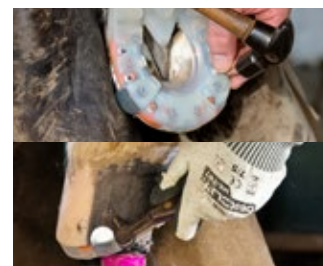
For detailed information on adjusting the horseshoe, please refer to the information available online: www.duplo-frank.de/en/faq-adjustment



Here you can find the instructional video: <https://youtu.be/je7olgLGdL8>

(4) Nailing and Clinching

- You can use the same nails for our composite horseshoes as for a steel shoe; it is important to ensure that the nail head does not slip through the nail hole.
- The correct clinching of the nails is extremely important.
- Adjust the quarter clips to the hoof angle if you are using a clipped horseshoe. When using the Duplo Basic, it is necessary to grind down the clips to prevent injuries.
- Finally, thoroughly smooth the clinched nails and the hoof wall.



Please pay attention to the safety instructions applicable to our products. For further details regarding the application and potential re-use of your horseshoe, take a look at the detailed information online. If you have questions or face individual challenges, our Customer Service Team is ready to assist you!

Duplo Composite Horseshoes

H. Frank Kunststofftechnik GmbH
Vorderfreundorfer Straße 20
94143 Grainet, Germany

Phone: +49 (0) 8585/96926-0

Fax: +49 (0) 8585/96926-119



[duplo_composite_horseshoes](https://www.instagram.com/duplo_composite_horseshoes)



Duplo Composite Horseshoes



info@duplo-frank.de



www.duplo-frank.de



Latest Update: June 2024